

English

MODEL#PES120DM

Wall Dimmer For Fluorescent Lamps

Rated at 120 V~ 60 Hz; 600 VA

Important Notes

Please read before installing.

- CAUTION:** To avoid overheating and possible damage to other equipment, only use to control fluorescent lighting fixtures with PES120DET8 Fluorescent Ballast.
- Install in accordance with all national and local electrical codes.
- When no "grounding means" exist within the wallbox then the NEC: 2002, Article 404-9 allows a dimmer without a grounding connection to be installed as a replacement, as long as a plastic, noncombustible wallplate is used. For this type of installation, cap or remove the green ground wire on the dimmer and use an appropriate wallplate. For new installations, install a test switch before installing the dimmer.
- Protect dimmer from dust and dirt when painting or spackling.
- Recommended minimum load is 40 Watts
- It is normal for the dimmer to feel warm to the touch during operation.
- Clean dimmer with a *soft damp cloth only*. Do not use any chemical cleaners.

Warranty Terms

Limited 5 years Warranty

Power Electronics & Systems, Inc. (PES) warrants each new dimmer for a period of two years from the date of shipment, to be free from defects in materials or workmanship under conditions of normal use when installed and operated under PES product specifications and in accordance with the applicable Safety Standards of Underwriters Laboratories.



E359029

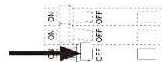
2790 Skypark Drive, Suite # 110
Torrance, CA90505 USA
Tel. (310) 626-6222
Fax (310) 626-6224
Email: pesystem@earthlink.net
www.poweres.com

• Easy-to-follow Instructions

Installation

1 Turning OFF power.

- Turn power OFF at circuit breaker (or remove fuse).

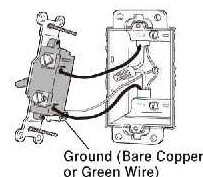


2 Removing wallplate and switch.

- Remove wallplate and switch mounting screws.
- Carefully remove switch from wall (do not remove wires).



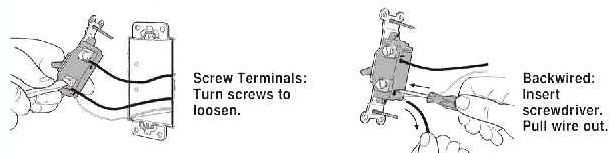
3 Identifying the type of circuit.



SINGLE-POLE: Insulated wires connected to two screws of the same color. Replace with a SINGLE-POLE dimmer. See Step 5.

4 Disconnecting switch wires.

- Carefully disconnect switch wires.



Important Wiring Information

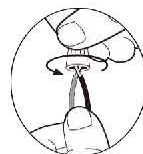
When making wire connections, follow the recommended strip lengths and combinations for the supplied wire nuts. **Note:** Wire nuts provided are suitable for **copper wire only**. For aluminum wire, consult an electrician.

Small:

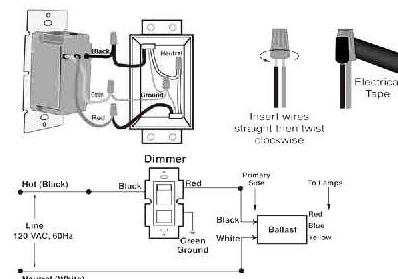
Strip insulation 3/8" (10 mm) for 14 AWG wire
Strip insulation 1/2" (13 mm) for 16 or 18 AWG wire
Use to join one 14 AWG supply wire with one 16 or 18 AWG control wire.

Large:

Strip insulation 1/2" (13 mm) for 10, 12 or 14 AWG wire
Strip insulation 5/8" (16 mm) for 16 or 18 AWG wire
Use to join one or two 12 or 14 AWG supply wires with one 10, 12, 14, 16, or 18 AWG control wire.



5 Single-Pole Wiring Application



Connect wires per WIRING DIAGRAM as follows:

Screw wire nuts on clockwise making sure no bare conductors show below the wire connectors. Secure each connector with electrical tape.

NOTE: Dimmer can be installed on either the Load or Line side.

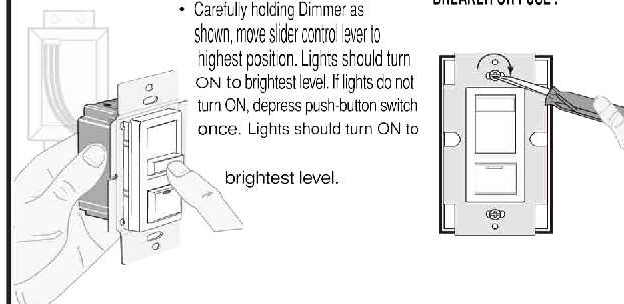
- Green dimmer Ground lead to Green or bare copper wire in wall box.
- Black dimmer lead to any wall box wire removed from old switch.
- Red dimmer lead to remaining wall box wire.

6 Testing your Dimmer prior to mounting in wall box:

- Restore power at circuit breaker or fuse.
- Carefully holding Dimmer as shown, move slider control lever to highest position. Lights should turn ON to brightest level. If lights do not turn ON, depress push-button switch once. Lights should turn ON to brightest level.

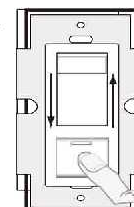
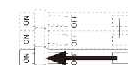
Dimmer Mounting:

TURN OFF POWER AT CIRCUIT BREAKER OR FUSE.



7 Turning ON power.

- Turn power ON at circuit breaker (or replace fuse).



OPERATION

ON/OFF:
Depress push-button switch to ON position - Lights will turn ON.
Depress push-button switch to OFF position - Lights will turn OFF.

BRIGHTEN & DIM:
Move slider control lever - Lights will BRIGHTEN or DIM.